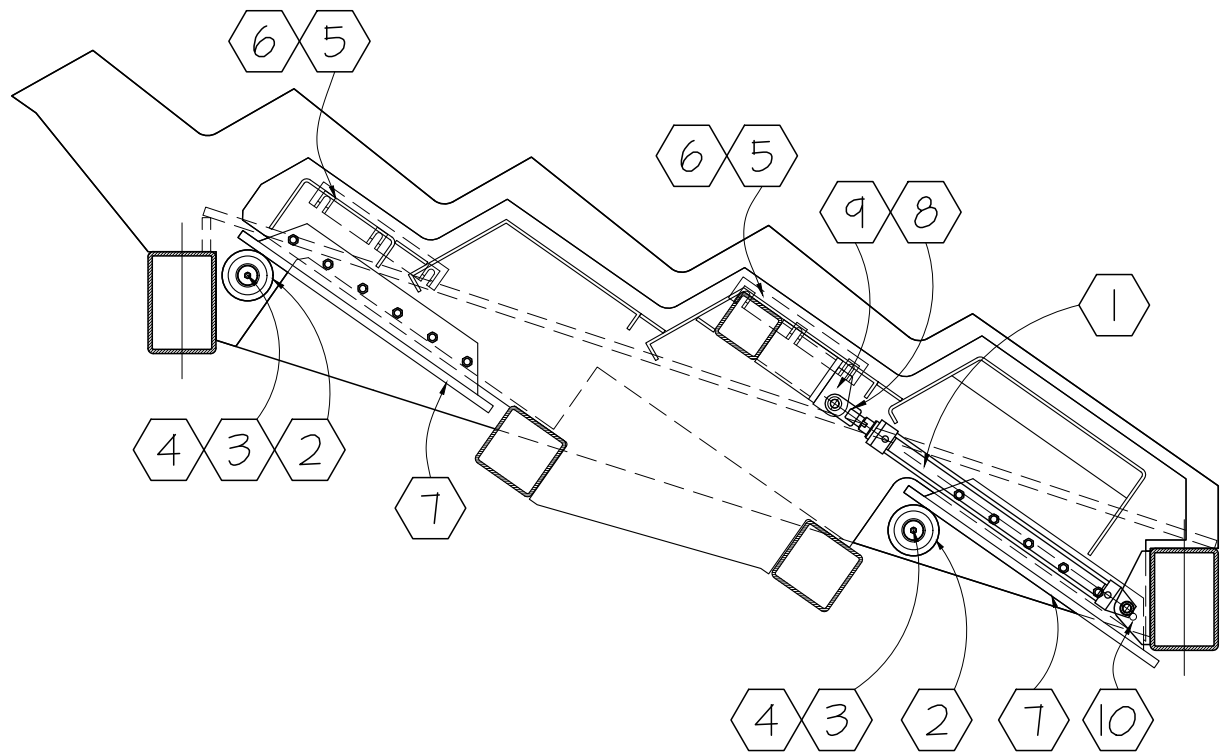


4-STEP, 27"/ 29"/ 36"/ 40" STROKE, 35° SASF ( HYDRAULIC )



Parts list		
Ref #	Part #	Description
1	LSC2527R	Hydraulic Cylinder, Royal 2.5 x 27"
	LSC32527R	Hydraulic Cylinder, Royal 3.25 x 27"
	LSC2529R	Hydraulic Cylinder, Royal 2.5 x 29"
	LSC32529R	Hydraulic Cylinder, Royal 3.25 x 29"
	LSC32536R	Hydraulic Cylinder, Royal 3.25 x 36"
	LSC440R	Hydraulic Cylinder, Royal 4.0 x 40"
2	DASFOIOD	Wheel c/w RBCSJ8516 Bearing (2)
	LSFI4	Wheel c/w MCGILL SB22212 SS Bearing (2)
3	LSFI2	Single Wheel Axle c/w hub ( no wheels )
		* Customer to verify hub diameter*
4	LSFI3	Double Wheel Axle c/w hub ( no wheels )
		* Customer to verify hub diameter*
5	LSFI6	UHMW Guide Slide
6	LSFI7	UHMW Guide Shim PL1/8"
7	LSFI8-27	Replacement 27" Stroke Runner Bar
	LSFI8-29	Replacement 29" Stroke Runner Bar
	LSFI8-36	Replacement 36" Stroke Runner Bar
	LSFI8-36A	Replacement 36" Stroke Runner Bar (9-Hole)
8	LSF20	Rod Clevis for 2.5" Cylinder
	HC5C	Rod Clevis for 3.25" Cylinder
	HC6	Rod Clevis for 4.0" Cylinder
9	LSF21	Top Mount for 27", 29", 36" Cylinder
10	LSF22	Cylinder Bottom Mount for 1" Pin
	LSF32	Cylinder Bottom Mount for 1 3/8" Pin
11	TEMPO	OPTION: APM/DPM Follower Cylinder