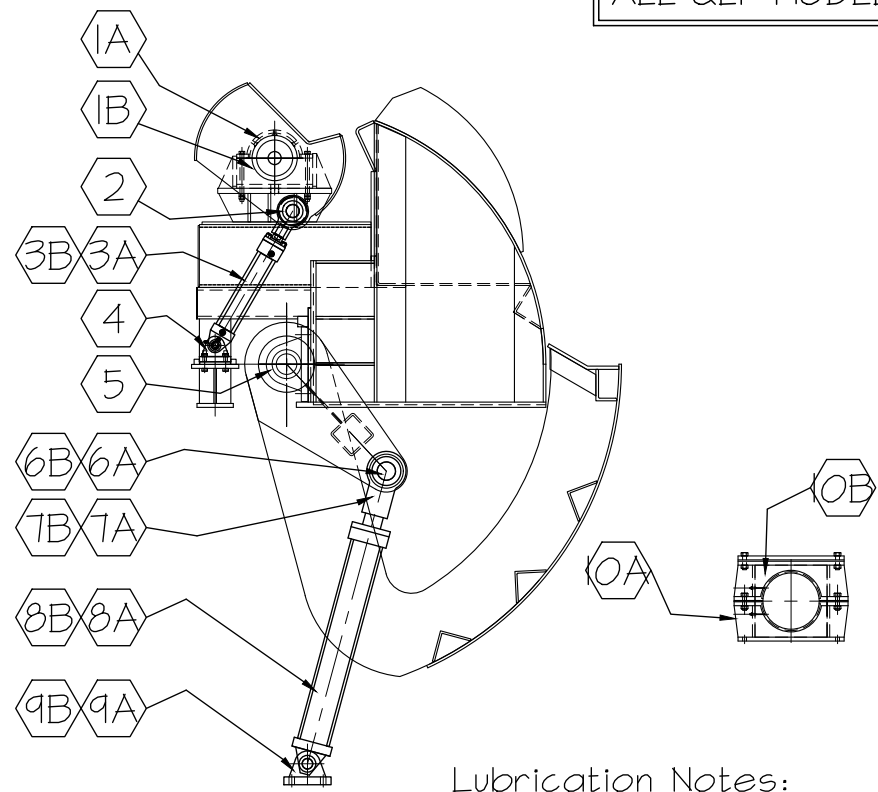


ALL QLF MODELS




Lubrication Notes:

1. Grease All Rod Eyes & bases (2) (4) (6) (9) (Once a Week)
2. Grease bearing (5) 2 places. (Once a Month)
3. Grease Tuffcast Steady Brg. (10) (Once a Week)

Parts list

Ref #	Part #	Description	# Req'd
1A	QLFO31	SNL Pipe Top Bushing 750XL	4
1B	QLFO32	SNL Pipe Bottom Bushing 750XL	4
2	QLFO10	SNL Cyl. Rod Eye c/n Spherical Bushing (2 1/2"φ Bore)	2
3A	LQC325145R	'LQC' 3 1/4"φx14 1/2" STROKE 2"φ ROD, 1 3/4"-12 THREAD CUSHIONS BOTH ENDS, OVERSIZE BASE PINS (1 3/8"φ)	2
3B	LQC32513R	'LQC' 3 1/4"φx13" STROKE 2"φ ROD, 1 3/4"-12 THREAD CUSHIONS BOTH ENDS, OVERSIZE BASE PINS (1 3/8"φ)	2
4	QLFO03	Cyl. Base Mount c/n Spherical Bushings (1 3/8"φ Bore)	2
5	QMP315	QMP20-315 3 15/16" Blue Brute Brgs.	2
6A	QLFO07A	Rod Eye Pins, for 6" Rod Eye	2
6B	QLFO08A	Rod Eye Pins, for 5" Rod Eye	2
7A	QLFO07	Rod Eye, 6". c/n Spherical Bushings	2
7B	QLFO08	Rod Eye, 5". c/n Spherical Bushings	2
8A	LQC636R	'LQC' 6"φx36" (GROSS) STROKE (32" NET) C/M 3 1/2"φ ROD, 3 1/4"-12 THREAD 4" STOP TUBE, CUSHIONS BOTH ENDS	2
8B	LQC536R	'LQC' 6"φx36" (GROSS) STROKE (32" NET) C/M 3 1/2"φ ROD, 2 1/2"-12 THREAD 4" STOP TUBE, CUSHIONS BOTH ENDS	2
9A	QLFO01	Cyl. Base Mount, 6". c/n Spherical Bushing	2
9B	QLFO02	Cyl. Base Mount, 5". c/n Spherical Bushing	2
10A	QLFO24	Tuffcast Steady Brg. & Housing to suit 10" X.S. Pipe at Intermediate Support.	2
10B	QLFO25	Tuffcast Bushing	2
11	TDC2x12	Tempo Follower Cylinder Digital (not shown)	1

REV BY D. M. Y.	DESCRIPTION	U.S. PATENT # 5,257,688	U.S. PATENT # 5,423,417	© 1992 to 2020, LINDEN FABRICATING LTD.	 <b>THE LINDEN GROUP</b> LINDEN FABRICATING P.G. LTD. PRINCE GEORGE B.C.	BY D. M. Y.	SCALE
A JMD 11 20	ISSUED FOR INFORMATION	U.S. PATENT # 5,119,930	U.S. PATENT # 6,450,324			DW J.M. 01 11 20	NTS
		U.S. PATENT # 5,174,351	U.S. PATENT # 6,419,080	The unauthorized reproduction, in whole or in part, of this drawing for any purpose whatsoever, including as part of a call for tender, is strictly prohibited.		AP	QLFFPM
		CANADIAN PATENT # 2,077,777	CANADIAN PATENT # 1,277,682			SPARE PARTS IDENTIFICATION & COST	REV A
		CANADIAN PATENT # 2,046,981	CANADIAN PATENT # 2,389,780				