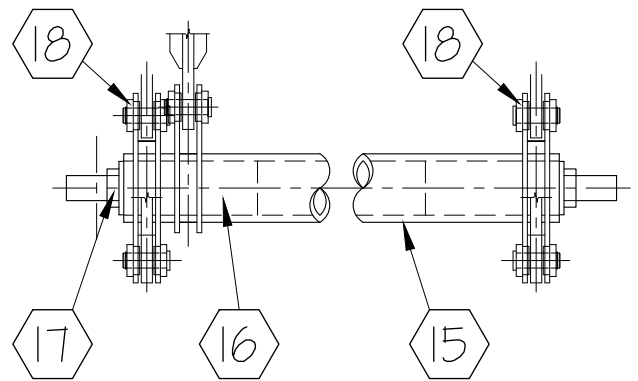
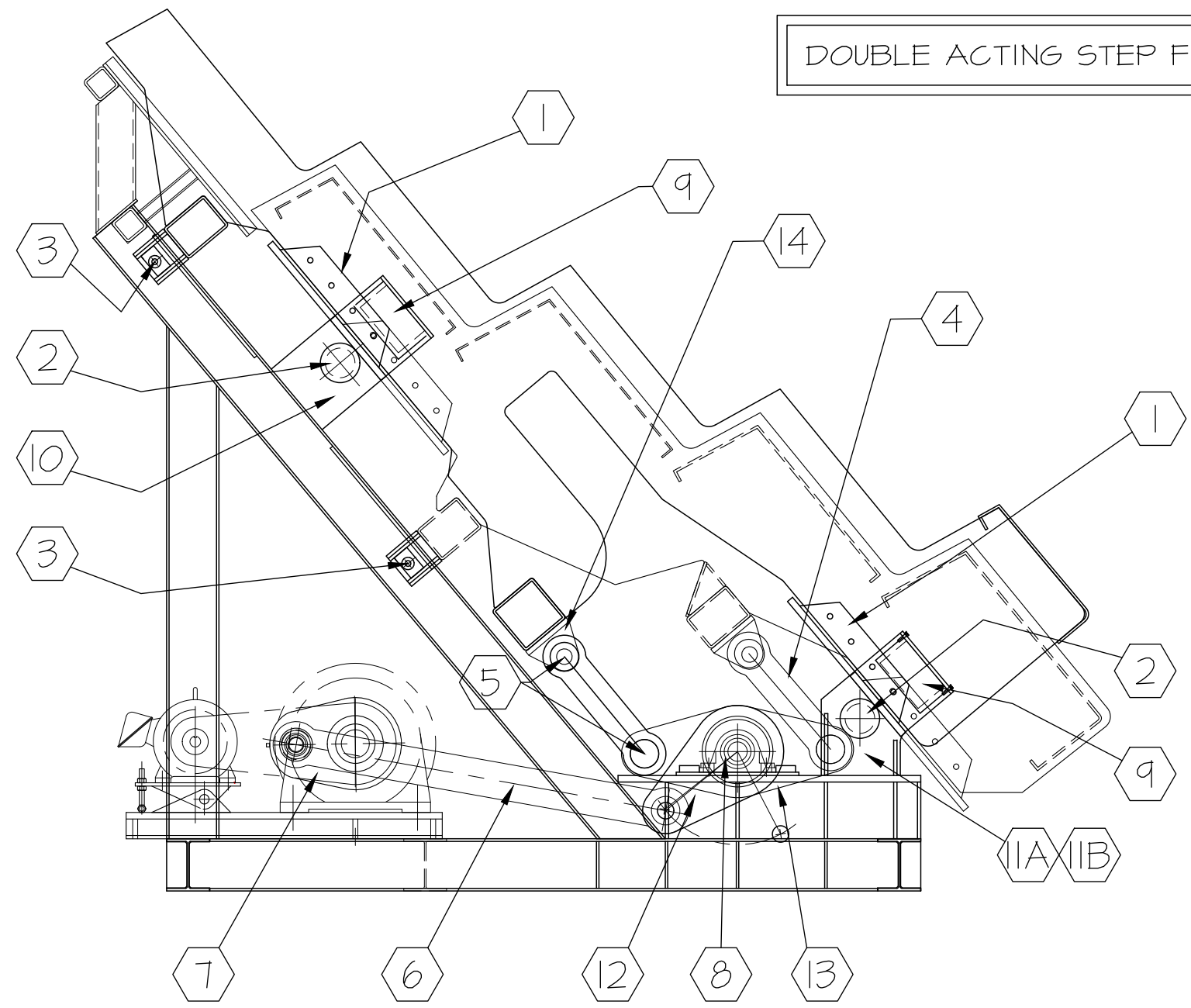


DOUBLE ACTING STEP FEEDER 36" STROKE



Lubrication Notes:

A) Lincoln Model 83668 Grease Pump, SL32 Injectors - CYCLE PUMP HOURLY
 1. Grease wheels (2) 8 places. SEE AUTO LUBE INSTRUCTIONS IN MANUAL
 2. Grease bearings (8) 2 places. SEE AUTO LUBE INSTRUCTIONS IN MANUAL
 3. Grease pins (5) (18) 9 places. SEE AUTO LUBE INSTRUCTIONS IN MANUAL
 USE EP-2 Grease. Check lube points and adjust injectors to ensure good flow. REFER TO LINCOLN MANUALS SUPPLIED AND ON-LINE AT lincolnindustrial.com

B) Manual lubrication - grease gun

1. Grease wheels (2) 8 places. 3-Times per week
 2. Grease bearings (8) 2 places. 1-Times per week
 3. Grease pins (5) (18) 9 places. 3-Times per week
 4. Grease cam followers (3) 4 places. 1-Times per week

NOTE: CAM FOLLOWERS SHOULD BE LOOSE AGAINST AR PLATE
 * DO NOT OVER TIGHTEN

Parts list

Ref #	Part #	Description	# Req'd
1	DASF014	36" Stroke Wheel Runner Assembly	8
2	DASF010D	Std. Wheel Assembly (Top Wheels)	4
3	DASF015	Front/Rear Cam Follower Assemblies	8
4	DASF011S	Linkage 36" Stk. c/w Spherical Bushings (60mm Bore)	4
5	DASF018	Pin Assembly (60mm)	9
6	DASF039S	Driver Linkage c/w Spherical Bushing (60mm Bore) & Spherical Roller Brq.	1
7	DASF038U	Drive Hub Assembly c/w UI x ___" Taper Bushing	1
8	DASF100	QMPF20-315 BLUE BRUTE x 3 15/16" Brq	2
9	DASF032	UHMW Guide Block Assembly	4
10	DASF030	Front Wheel Mount c/w Axle	2
	DASF010E	Wheel Axle	2
	DASF010F	Axle Hub	2
	DASF010H	Axle End Cap	4
IIA	DASF035	50 Degree, Rear Wheel Mount c/w Axle	2
IIB	DASF031	35 Degree, Rear Wheel Mount c/w Axle	2
	DASF010E	Wheel Axle	2
	DASF010F	Axle Hub	2
	DASF010H	Axle End Cap	4
12	DASF024	Drive Plate Assembly	1
13	DASF019	Pivot Plate Assembly	2
14	DASF017	Linkage Mount	4
15	DASF086	36" Stroke Torque Tube, c/w Pivot and Drive Plates. Pipe length to suit.	1
16	DASF062	Solid C1045 Stub Shaft. Diameter to suit.	2
17	DASF062B	Bearing Spacer	2
18	DASF021	DASF Linkage Pin Hub (no pin)	10